



MD-60

Capacity: 2300 m³/h

The MD-60 is suitable for the extraction of small amounts of wood chips and wood dust, but is not designed for heavy duty applications. Woodworking machines shall have a maximum diameter of 180 mm at the outlet. The MD-60 can also be used in situations where other types of dry chips and dust have to be extracted in limited quantities.

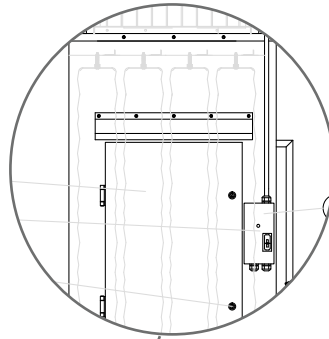


**Atex-
certified**



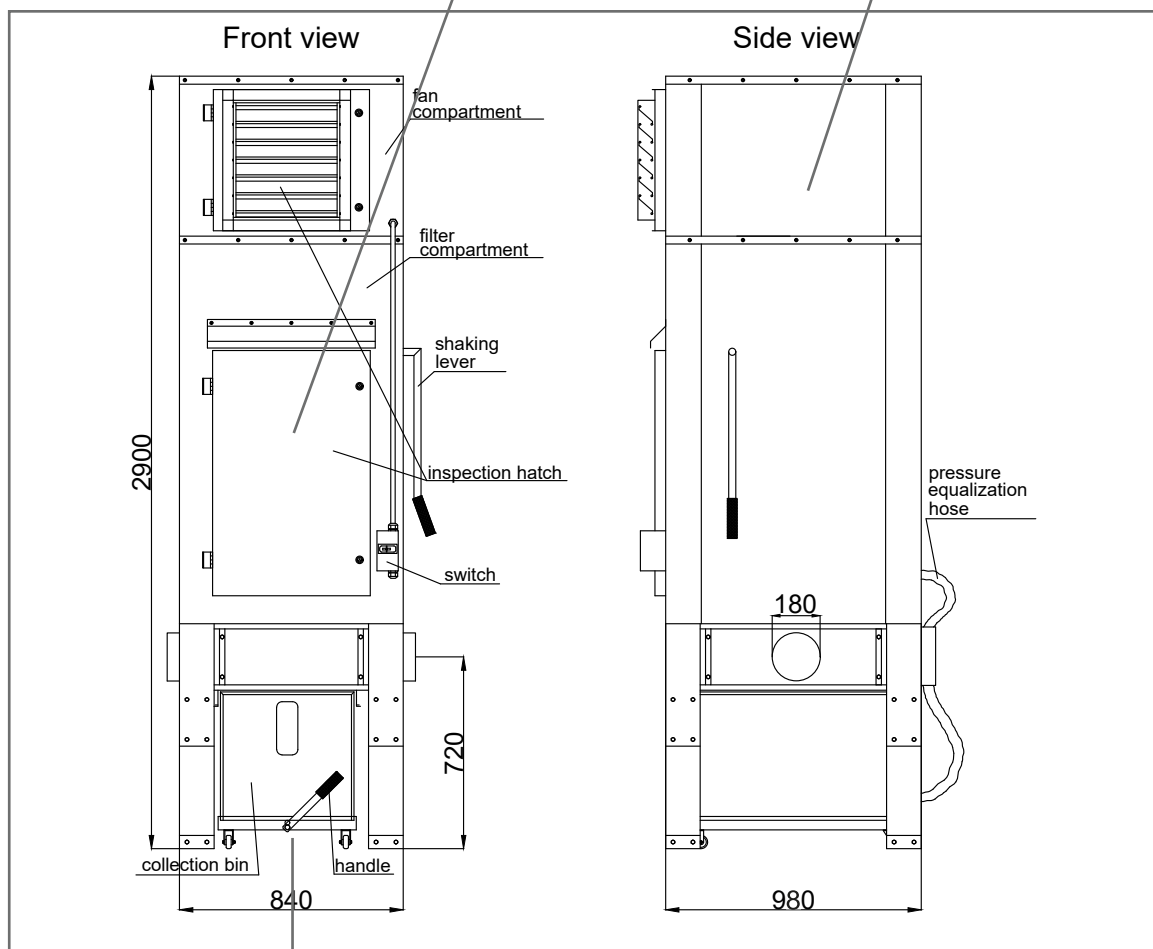
Filter sleeves

Riedex filter sleeves are manufactured from BGIA-certified polyester needle felt.



Fan

The high-efficiency fan allows for rapid start-up, providing energy savings during starting. An additional feature is its low noise level with a perfect sound insulation of the fan compartment.



Waste

Waste is collected in a mobile bin that contains a plastic bag. A single pull of the handle suffices to unlock the bin and roll it out so the plastic bag can be changed easily and conveniently.

Technical specifications

Capacity	2300 m ³ /h
Pressure	2000 Pa (option: 2600 Pa)
Power capacity	2,2 kW / 400 V / 4,5 A
Suction opening	Ø 180 mm
Filter surface	11 m ²
Filter material	BGIA-certified polyester needle felt
Filter class	M/H3 (< 0,1 mg/m ³)
Filter cleaning	Manual
Collection volume	180 L
Noise level	65 dB (A)
Dimensions B x D x H	840 x 980 x 2900 mm

Options

Lowered version (height 2320 mm)

Double-height bin (extra height: 500 mm)

Automatic switching in unison with connected machinery (by means of auxiliary relay)

Built-in extinguishing system

Single phase motor (230V)

Safety and Regulations

The MD-60 is designed with maximum safety in mind for combating fire and dust explosions. The unit thus complies with **EN 16770** standards. The unit has been tested by the TNO for fire and explosion safety and may be placed on the work floor by virtue of its high safety levels.

A high-quality, BGIA-certified polyester needled felt produced by a reputable German manufacturer is used for the filter material. Use of this material and the filter's 11 m² surface area guarantee residual dust emission levels of less than **0,1 mg/m³**.



MD-series summary

Type	Versions				
	B	P	RV	C	Capacity m ³ /h
MD-40	+	-	-	-	1100
MD-60	+	-	-	-	2300
MD-90	+	+	-	-	3450
MD-150	+	+	+	-	4600
MD-280	+	+	+	+	6000
MD-295	+	+	+	+	8000
MD-350	+	+	+	+	9000
MD-450	+	+	+	+	12000
MD-475	+	+	+	+	15000
MD-500	+	+	+	+	20000

We reserve the right to make changes without notice

The MD series includes six models ranging in capacity from 2300 to 12000 m³/h.

Warranty

blue-vent extends a two-year warranty on materials and manufacture with all its extraction systems.