

ROTARY VALVES BRV-B.

The BRV-B rotary valves (air-locks) series are designed for as an out feeding unit from filter or cyclone. The rotary valve can handle dry dust, chips, powder and granules. There are three available types of BRV-B.

CONSTRUCTION

It is a welded construction in 3 mm steel plate, the rotor house powder coated as standard RAL 5010. The rotor is separated from the rotor house with rubber gaskets. The shaft is connected to an external bearing on the rotor house and the gearmotor is direct connected into the rotor.

The type BRV-B rotor is equipped with 8 rubber vanes.

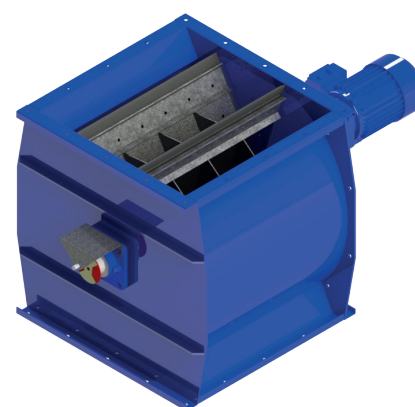
Rotor with 8 vanes (BRV-B) in neoprene rubber Rotor blades, maximum temperature +80° C and minimum temperature ÷30° C.

FUNCTION

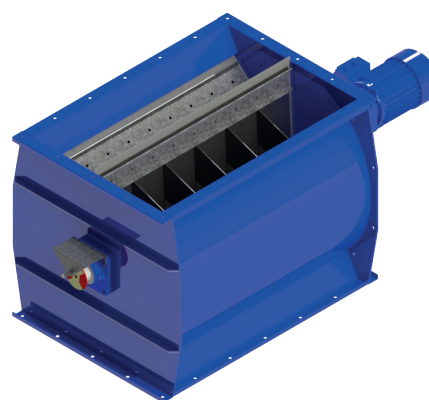
The BRV-B rotary valves (air-locks) series are used under a filter or a cyclone. To feed the material pressure less down into a pneumatic transport system or down into a waste bin or container, under the filter or the cyclone.

ROTATION DETECTOR:

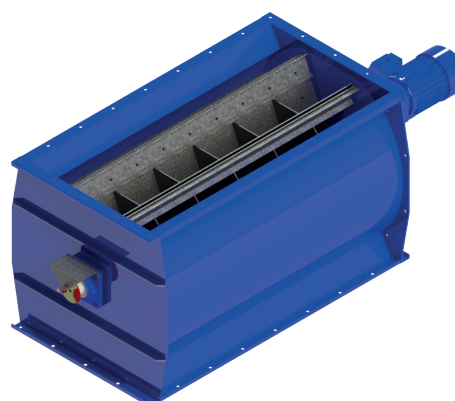
The rotary valves are equipped standard with a bracket for mounting the rotation detector. The rotation detector is an option. Rotation detector 24 VDC.



BRV-500B



BRV-750B



BRV-1000B

OPERATING RANGE

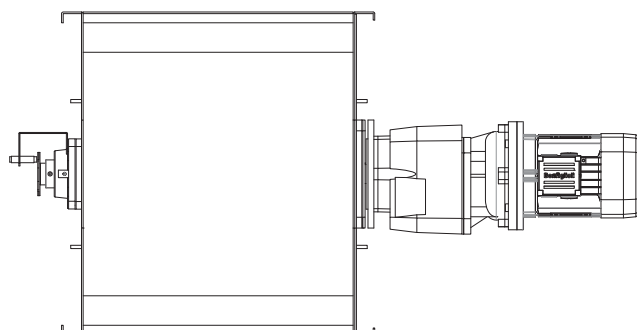
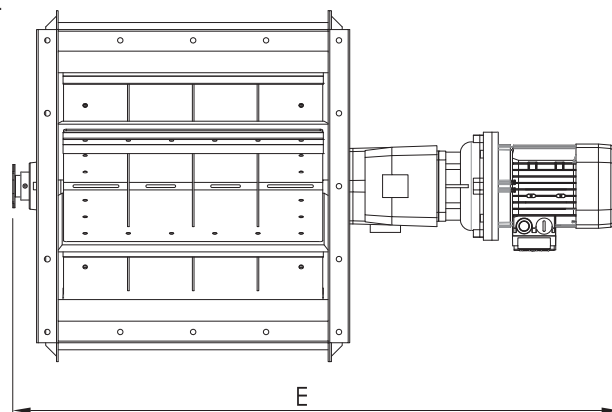
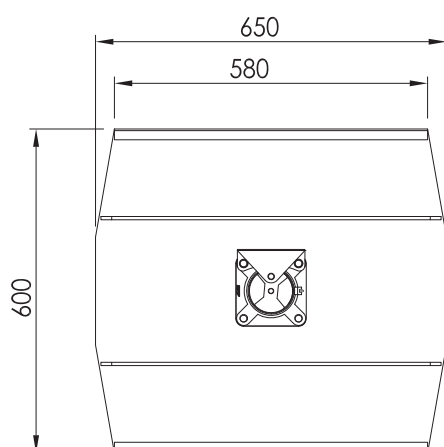
Pressure: + 5,000 Pa. - ÷ 5,000 Pa.

Capacity: BRV-B 60-120 M³/h.

Operating temperature: ÷ 30 to + 80° C.

ELECTRICAL DEVICES

Gearmotor 0.75 KW - 1.1 KW, 400 V., 50 HZ



TYPE ROTARY VALVE	PORT SIZE (LxW) (MM)	E (MM)	MOTOR KW 400 V 50 HZ	RPM	CAPACITY AT 50% FILLING M ³ /H	WEIGHT KG
BRV-500 B	500x500	1,039	0.75	16	60	139
BRV-750 B	750x500	1,289	0.75	16	90	184
BRV-1000 B	1000x500	1,539	1.1	16	120	259

OPERATING PRESSURE Ps.	AIR LOSS (M ³ /H) AT 250 MM WG	AIR LOSS (M ³ /H) AT 500 MM WG
BRV-500 B	100	150
BRV-750 B	150	230
BRV-1000 B	180	320

We reserve the right to make changes without notice