

The silos model RS are flat bottom silos designed for storage of dry wooden dust and chips. Three models are available in the RS31 series with diameter 3.1m and five models for the larger RS44 series with diameter 4.4m. The Silo program include various discharge options. Screw conveyor is included as standard.

### CONSTRUCTION

All silos are constructed as a modular panel system. Silos consist of three main sections. The bottom section for discharge of material, the storage section with various heights and capacities. The top (roof construction) section with a conical construction for RS44. RS31 has a flat roof construction. The roof can be fitted with cyclones or filter.

Discharge is done with heavy duty scraper with multiple layer 8mm spring steel blades. The scraper feed material into discharge auger(s) – in black steel. Silo floor is made in 6mm black steel with reinforcement flanges. All black steel parts are power coated.

Silo panels are constructed in 2-3 mm galvanized steel plate Z275. All panels are bolted together.

### FUNCTION

Wood dust and shavings are loaded into the top of the silo. This is usually done with pneumatic transport to a cyclone or with a chain conveyor directly to silo. The material fills the silo for storage. After storage the material can be discharged to a truck for removal, to a boiler plant, pelleting or briquetting plant. The discharge arrangement can be adjusted in design and capacity to suit the application.

### MATERIAL DISCHARGE

One or several discharge screws can be fitted in the bottom depending on required configuration. Discharge can also be done directly through a rotary valve into for ex. a chain conveyor. All rotating equipment are fitted with rotation sensors.

### INLET

Inlet(s) in top of the silo are made according to requirement. The top plate on the RS41 can be adjusted to accommodate the mounting of up to four cyclones.

### ACCESS TO THE SILO

Silo is equipped with two doors for access to discharge scraper and screw. One above and one below the floor. Ladder and platform according to US/EU/Australian standards give access to the roof. Intermediate platforms can be supplied as option.

### SAFETY DEVICES

Silo is supplied with explosion relief. Installation of sprinkler system with dry riser is an option. Dust level sensors are supplied as option. Two units for detection of “high level” and “full level” are recommended.

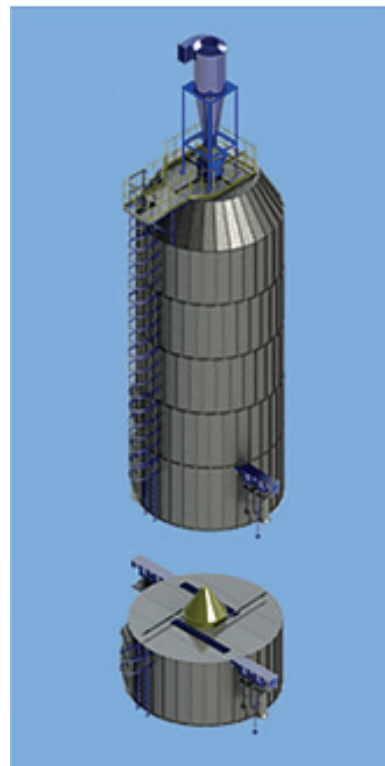
Silo is equipped with pressure equalizing vent.

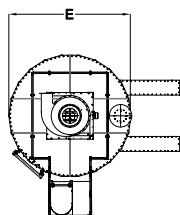
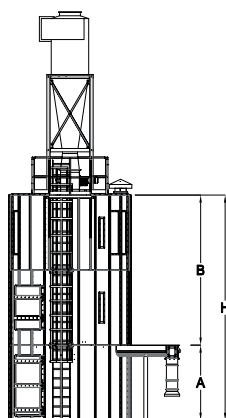
### OPERATING RANGE

Pressure: 0 to +0.5kPa.

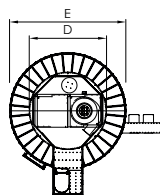
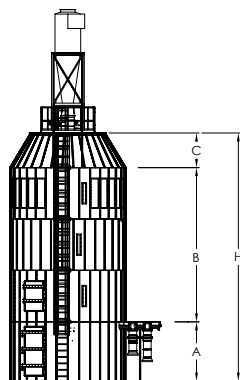
Storage capacity : 30-162 m<sup>3</sup>.

Operating temperature: ÷ 30 to + 65 °C.





SILO RS31



SILO RS44

### ELECTRICAL DEVICES

RS31 Scraper unit:

Gearmotor 2.2 KW, 400V, 50HZ, 1.7 RPM.

RS31 Screw conveyor:

Gearmotor 1.5-2.2 KW, 400V, 50HZ, 14-21 RPM.  
(option for multiple screw conveyors).

RS44 Scraper unit:

Gearmotor 2.2 KW, 400V, 50HZ, 1.7 RPM.

RS44 Screw conveyor:

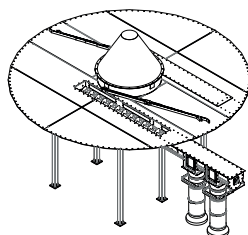
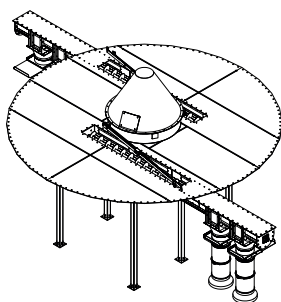
Gearmotor 2.2 KW, 400V, 50HZ, 14-21 RPM  
(option for multiple screw conveyors or chain conveyor).

Door limit switches: 24V. DC/220 V.AC.

Level sensor: 24 V. DC/ 220 V. AC. (optional supply).

BV SILO RS31 AND RS44								
BV type	A (MM)	B (MM)	C (MM)	D (MM)	E (MM)	H (MM)	Capacity (M <sup>3</sup> )	Weight (KG)
RS31-2F (A/B)	2.300	4.000			3.100	6.300	30	3200
RS31-3F (A/B)	2.300	6.000			3.100	8.300	45	3600
RS31-4F (A/B)	2.300	8.000			3.100	10.300	60	4000
RS44-1F (A/B)	2.300	2.000	1.350	3.000	4.400	5.650	42	4700
RS44-2F (A/B)	2.300	4.000	1.350	3.000	4.400	7.650	72	5400
RS44-3F (A/B)	2.300	6.000	1.350	3.000	4.400	9.650	102	6100
RS44-4F (A/B)	2.300	8.000	1.350	3.000	4.400	11.650	132	6800
RS44-5F (A/B)	2.300	10.000	1.350	3.000	4.400	13.650	162	7500

We reserve the right to make changes without notice



OUT-FEEDER/ SCREW CONVEYOR		
Type / unit	Gear motor (kW/RPM)	Nominal capacity (M <sup>3</sup> /H)
RS31 Scraper unit	2.2/1.7	
RS31 Screw conveyors , ø 250 mm	1.5-2.2/14-21	10-15/screw
RS44 Scraper unit	2.2/1.7	
RS44 Screw conveyors, ø 250 mm	2.2/14-21	10-15/screw

We reserve the right to make changes without notice